

CHARACTER SIGNS



RAFIKI



**HOW OLD DO YOU
THINK THE WISE
RAFIKI IS?**

**WHAT WORD WOULD
YOU USE TO
DESCRIBE HER?**

IS SHE MYSTICAL?



CHARACTER SIGNS (CONTINUED)



SIMBA



**WHAT WORD WOULD
YOU USE TO
DESCRIBE SIMBA?**

**DOES YOUR SIMBA
POSE SHOW HIM AS
A CUB OR AS A
GROWN LION?**

**IS HE BRAVE
OR COWARDLY?**



CHARACTER SIGNS (CONTINUED)



MUFASA



**HOW CAN YOU USE
YOUR BODY TO SHOW
MUFASA IS A KING?**

**IS HE A YOUNGER OR
OLDER CHARACTER?**

**HOW DOES THE TYPE
OF ANIMAL HE IS
AFFECT THE WAY
HE STANDS?**



CHARACTER SIGNS (CONTINUED)



SARABI



**SARABI IS
SIMBA'S MOTHER.**

**WHAT IS SARABI'S
RELATIONSHIP
TO MUFASA?**

**HOW WOULD THIS
ROYAL CHARACTER
STAND?**



CHARACTER SIGNS (CONTINUED)



ZAZU



**IS ZAZU RELAXED,
OR UP-TIGHT?**

**WHAT KIND OF
ANIMAL IS HE?**

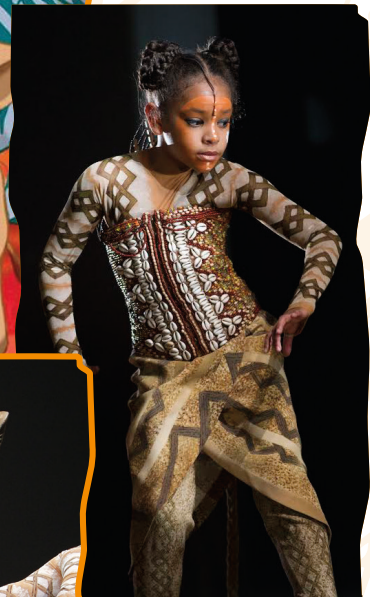
**WHAT IS HIS JOB IN
THE PRIDELANDS?**



CHARACTER SIGNS (CONTINUED)



NALA



**WHAT IS NALA'S
PERSONALITY?**

**IS SHE WEAK
OR STRONG?**

**HOW COULD YOU
SHOW HER BRAVERY
IN YOUR POSE?**



CHARACTER SIGNS (CONTINUED)



TIMON



**WHAT WORD
WOULD YOU USE TO
DESCRIBE TIMON?**

**IS HE NICE
OR UNKIND?**

**IS HE A LARGE OR
SMALL ANIMAL?**



CHARACTER SIGNS (CONTINUED)



PUMBAA



**WHAT WORD
WOULD YOU USE TO
DESCRIBE PUMBAA?**

IS HE HAPPY OR SAD?

LARGE OR SMALL?



CHARACTER SIGNS (CONTINUED)



SCAR



**WHO IS SCAR
RELATED TO?**

**WHAT DOES SCAR
WANT IN THE PLAY?**

**IS HE HONEST
OR DISHONEST?**



CHARACTER SIGNS (CONTINUED)



HYENAS



**WHERE DO THE
HYENAS LIVE?**

**WHO DO THEY HANG
AROUND WITH?**

**WHAT TYPE OF FOOD
DO THEY EAT?**

